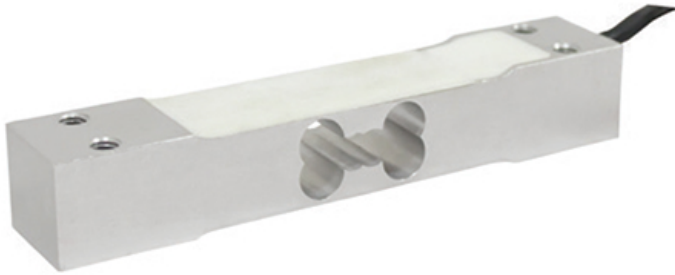


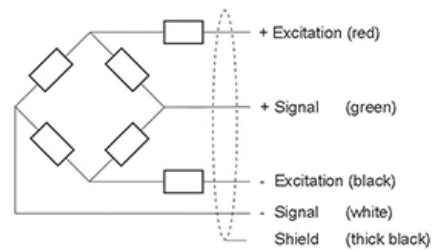
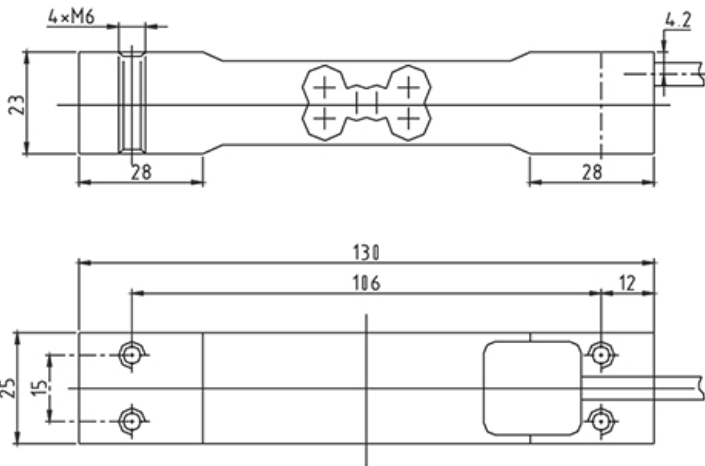
MK - 1022



5-40kg

FEATURE:

- Small capacity versatile single point load cell
- Only 2 hole for tightening
- Suitable for most simple weighing scale in industrial use
- Typical applications often include bench scale, packaging machines, filling machines, industrial process control
- Use high quality anodize aluminium



SPECIFICATION

| | | | |
|--------------------------------------|---------------------------|----------------------------------|----------------------|
| Rated capacities (E _{max}) | 5,6,8,10,15,20,30,35,40kg | Temperature, compensated | -10°C~+40°C |
| Rated Output | 2.0±0.2mV/V | Temperature, operating | -20°C~+50°C |
| Accuracy class | OIML C3 | Maximum safe overload | 150%E _{max} |
| Creep error (30min) | ±166ppm | Ultimate overload | 300%E _{max} |
| Zero balance | ±3%E _{max} | Excitation, recommended | 10V DC |
| TC ZERO | ±17.5ppm/°C | Excitation, maximum | 15V DC |
| TC SPAN | +20°C~+40°C, ±17.5ppm/°C | Protection class | IP65 |
| | -10°C~+20°C, ±11.67ppm/°C | Construction | Anodized Aluminium |
| Input resistance | 400±15Ω | Cable | Length: 0.5m |
| Output resistance | 350±3Ω | Cable | Diameter: Φ 5mm |
| Insulation resistance | ≥2000MΩ (50V DC) | Installation torque, recommended | 10N-m |
| Max platform size | 300x300mm | | |