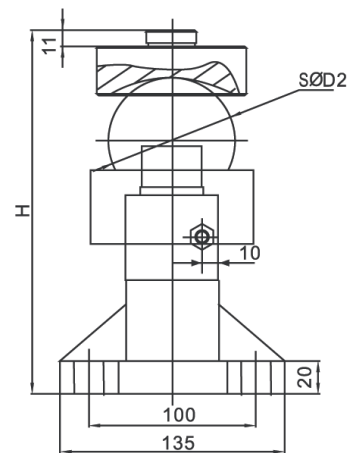
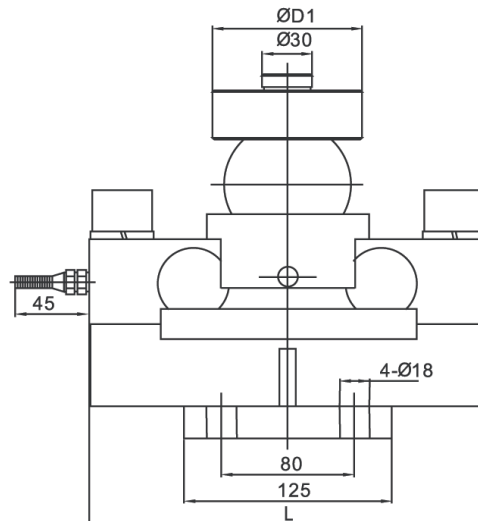
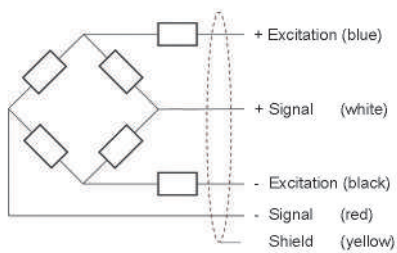


# MK-QS-D



## FEATURE:

- High precision, reliability and super stability
- Design of stainless steel ball, cup has super function in self-restoring corner pre-adjustment
- Anti-wallop and anti side force
- Easy to installation good interchangeability
- 5 core high quality orange cable
- Application to truck scale, railway scale hopper scale and other weighing equipment



## SPECIFICATION

|                       |                |                         |                |
|-----------------------|----------------|-------------------------|----------------|
| Rated capacities      | 30t            | Temperature compensated | -10°C ~ +40°C  |
| Rated output          | 5000           | Temperature, operating  | -30°C ~ +70°C  |
| Accuracy class        | C3             | Maximum safe overload   | 120%F.S        |
| Zero balance          | ±1%F.S         | Ultimate overload       | 200%F.S        |
| TC ZERO               | ±0.02%F.S/10°C | Excitation, recommended | 10-12V DC      |
| TC SPAN               | ±0.02%F.S/10°C | Excitation, maximum     | 15V DC         |
| Input resistance      | 750±10Ω        | Protection class        | IP68           |
| Output resistance     | 702±3Ω         | Construction            | Alloy steel    |
| Insulation resistance | ≥5000MΩ        | Cable                   | Length: 16m    |
|                       |                |                         | Diameter: Φ6mm |